



Advanced Composite Solutions



Problem

Blade fixing system failure – metal insert

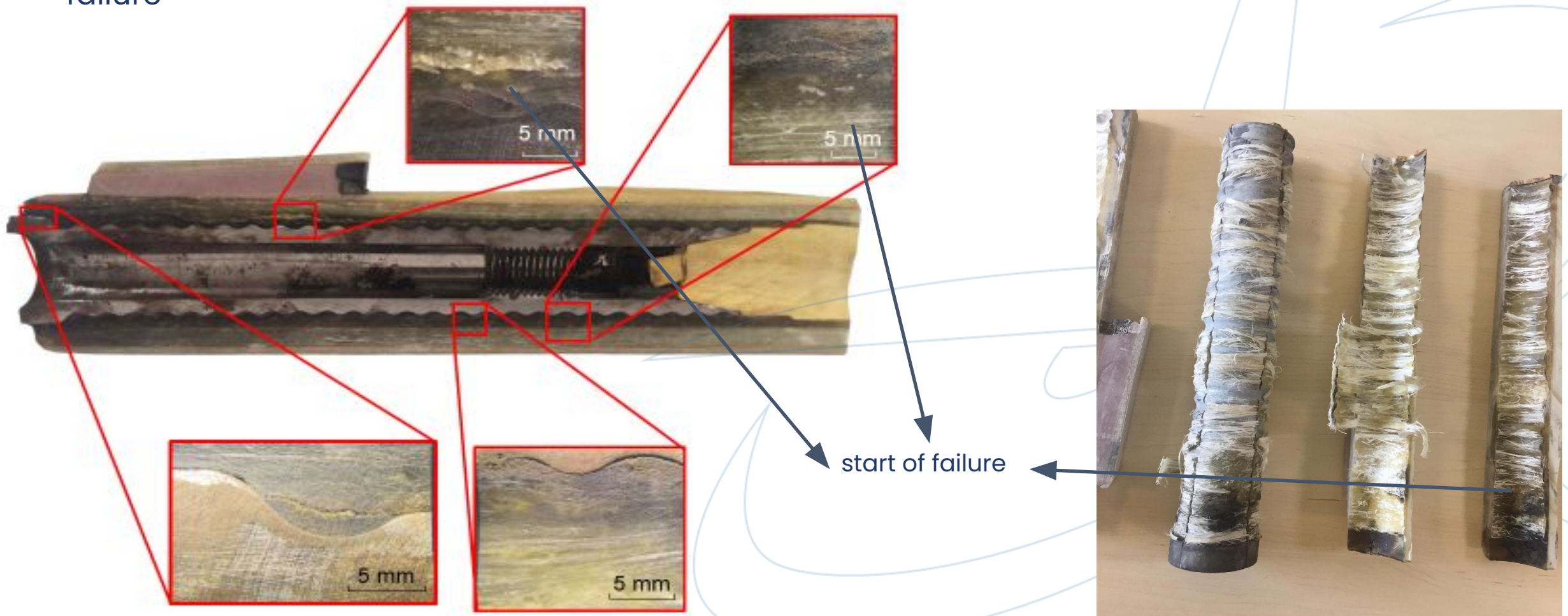
- Catastrophic damage
- Metal insert coming off the blade



Problem

Contamination

Micro and Macroscopic Analysis of the Insert infused with the Laminate - process failure



Problem

Contamination

Cut up for contamination analysis.

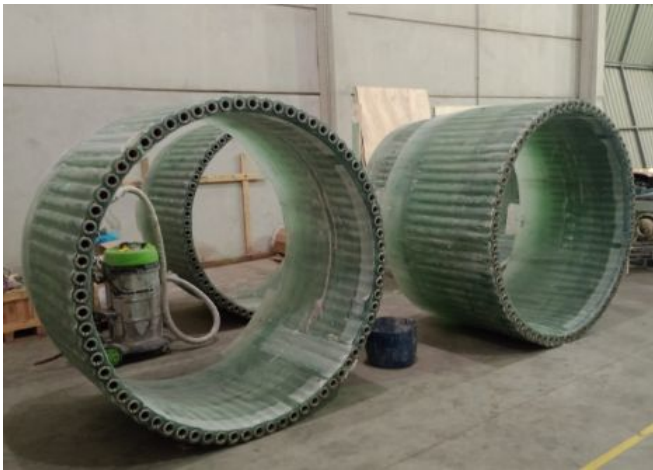
Metal insert completely detached from laminate/easy removal after cut in half



Our Solution!

Root Replacement

The solution consists of removing the original root of the blade and installing a new root. The new root is produced with technology that ensures the blade is fixed to the turbine.





Advanced Composite Solutions

